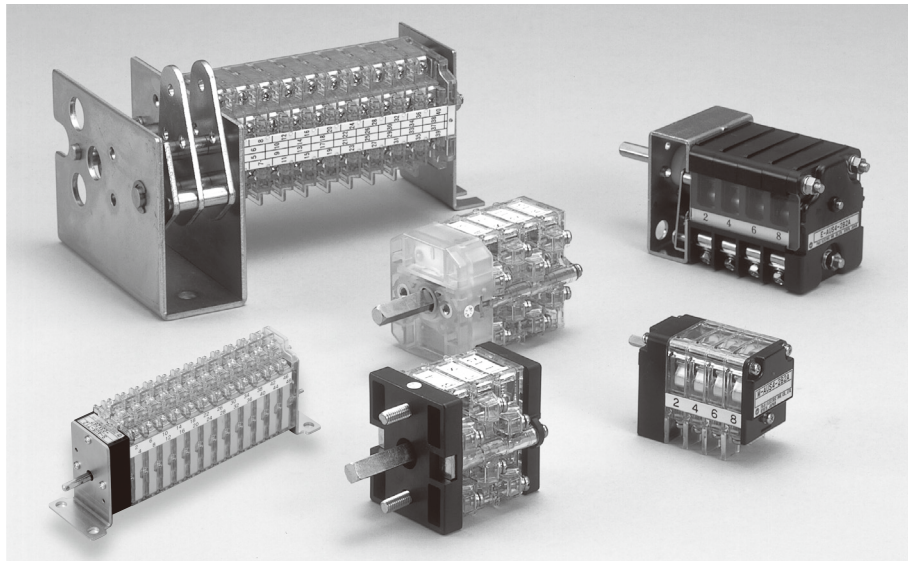




# AUXILIARY SWITCH



## FEATURES

Control devices for the circuit breaker play important roles for protecting the power system. It is an auxiliary switch that functions interlocking with the main circuit switching mechanism of the circuit breaker or the insulated switch, therefore it is required to have high reliability.

### ■ Rotary type auxiliary switch

- Cam-operated type
  - B, BM, BH type auxiliary switch
    - Applicable for shutting down relatively large current in frequently switching uses.
    - BMZ and CMZ type auxiliary switches
      - High-reliable auxiliary switches that have higher breaking capacity and higher impact resistance (prevention of chattering) than the conventional ones.
      - All the wiring terminals are located on one side, for making wiring work easier.
    - S type auxiliary switch
      - Relatively high breaking performance in spite of compact body size.
  - Drum type
    - M type auxiliary switch
      - Compactly designed and yet relatively high in breaking performance; therefore most suitable for use in downsizing equipment.

### ■ Push-type auxiliary switch

- UX-33A
  - Suitable for a high-voltage electromagnetic contactor or a vacuum circuit breakers. The contact is designed to incorporate a magnet so that the breaking capacity of the contact can be increased.

## SPECIFICATIONS (RATINGS, PERFORMANCE)

Specification	Type	Rotary type						Push type
		B-AUS	M-AUS	BM-AUS / BH-AUS	BMZ	CMZ	S-AUS	UX-33A
Rated insulation voltage (Ui)		600V				250V		
Rated current-carrying capacity (Ith)		20A	8A		20A		10A	
Breaking current capacity	110V DC	5.5A	2.2A		5.5A	11A	5.5A	3.3A
	110V AC	165A	88A		165A	220A	100A	80A
Current / Service life (110V DC)		1.5A / 500,000	2A / 10,000	1.5A / 500,000	5A / 50,000	10A / 30,000	5A / 300,000	3A / 250,000
Mechanical life		5,000,000	50,000	5,000,000		500,000	30,000	1,000,000
Contact resistance					50mΩ max.			
Withstand voltage		1 minute at 2,500V			1 minute at 2,000V			1 minute at 2,500V
Operating temperature		-20 to 60°C			-20 to 55°C			-20 to 60°C

## HOW TO ORDER

Select from the following product coding.

## PRODUCT CODING

[B, BH, BM, BMZ, CMZ, S type]

### BM-AUS10-10 (1A1B)

Basic type		No. of units *	Contact arrangement * 2 contacts in 1 unit
B-AUS	B type		
BH-AUS	BH type		
BM-AUS	BM type		
BMZ	BMZ type		
CMZ	CMZ type		
S-AUS	S type		

[M type]

### M-AUS6-3A3B

Basic type		No. of units *	Contact arrangement * 1 contact in 1 unit
M-AUS	M type		

[UX-33A type]

### UX-33A

Basic type

### 3A2B1DB

Contact arrangement

5A1B	5A	1DB
4A2B	4A1B1DB	
3A3B	3A2B1DB	
2A4B	2A3B1DB	
1A5B	1A4B1DB	

### Moisture resistance

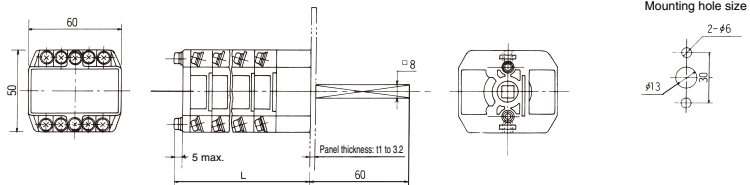
●Tropical versions are custom-made products.

Tropical version  
Custom product

A.B contact --- Standard contact  
DB contact --- Delayed contact  
\* The standard 1DB contact (terminal Nos. 25 and 26) is designed to accommodate a magnet inside. If a magnet is to be incorporated in the 1A contact, specify so.  
\* Terminal No. 26 and 12 are wired on the positive side as standard.

## OUTER DIMENSIONS

### B-AUS

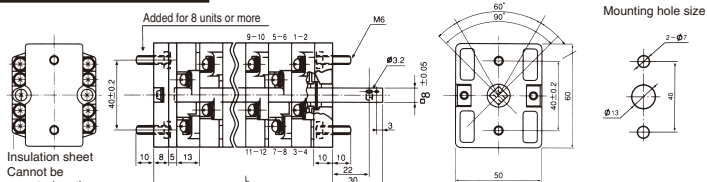


No. of units	3	4	5	6	7	8	9	10
L (mm)	70	83	96	109	122	135	148	161



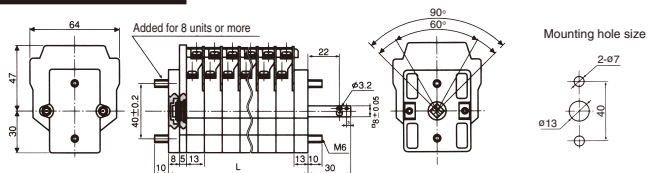
# AUXILIARY SWITCH

## BM-AUS / BH-AUS



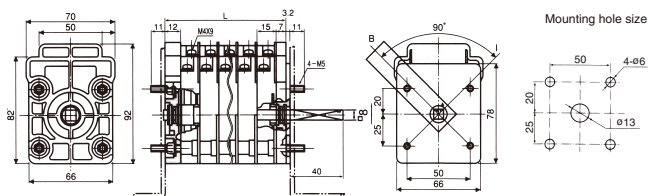
No. of units	1	2	3	4	5	6	7	8	9	10
L (mm)	36	49	62	75	88	101	114	127	140	153

## BMZ



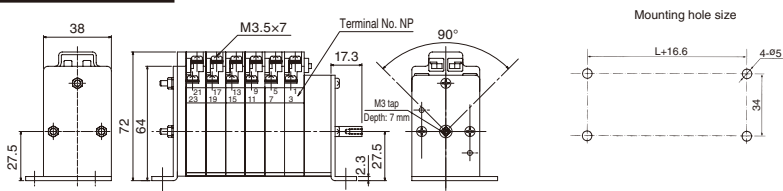
No. of units	1	2	3	4	5	6	7	8	9	10
L (mm)	36	49	62	75	88	101	114	127	140	153

## CMZ



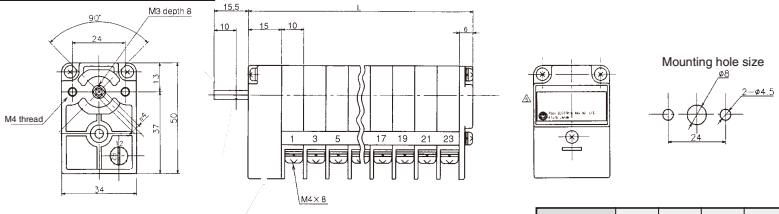
No. of units	1	2	3	4	5	6	7	8	9	10
L (mm)	33	49	64	79	94	109	124	129	154	169

## S-AUS



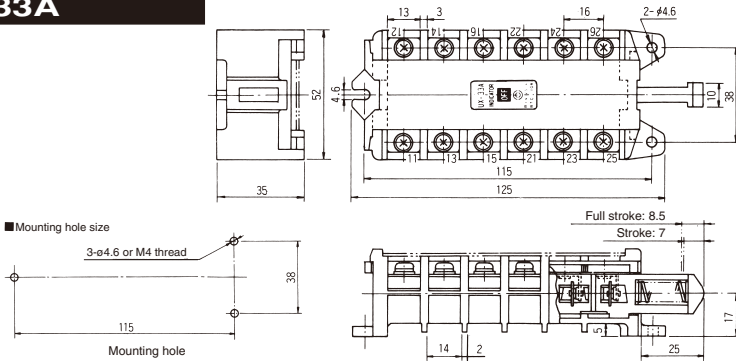
No. of units	1	2	3	4	5	6	7	8	9	10
L (mm)	31	42	53	64	75	86	97	108	119	130

## M-AUS



No. of units	4	6	8	10	12
L (mm)	61	81	101	121	141
Contact	2A2B	3A3B	4A4B	5A5B	6A6B

## UX-33A



### Indicator type

The ON / OFF status is shown by the indicator located at the center of the stage. This design ensures high reliability and safety as well as simple recognition.

● ON status → ● OFF status

